

# Copilot Microsoft 365 webinar & live demo

**10. april 2024**

# Dagens værter



Martin Dalsten Lytje  
Inspari



Kasper Fløe  
TD Synnex

# Agenda

**1** Velkommen & introduktion

**2** AI technology and impact

**3** Licensering & priser

**4** Konkrete fordele og - effektivitetsgevinster

**5** "What Copilot is, what it isn't"

**6** Datastyring og sikkerhedspolitikker

**7** The customer journey

**8** Demo

**9** Roadmap & praktiske anvendelsesområder

**10** Vejledning i brugen af AI prompting

**11** Fordelene ved Copilot Labs

**12** Take-aways & next step

# We deliver end-to-end data, AI & analytics offerings

Strong existing client base with 90% recurring revenue

Founded in 2007 with strong growth journey

Top 3 leading Microsoft partner

## Technologies



# We live our promise: Data Value Guaranteed

7 dedicated full-circle teams

More than 800 customers

30M€ in revenue

## Locations



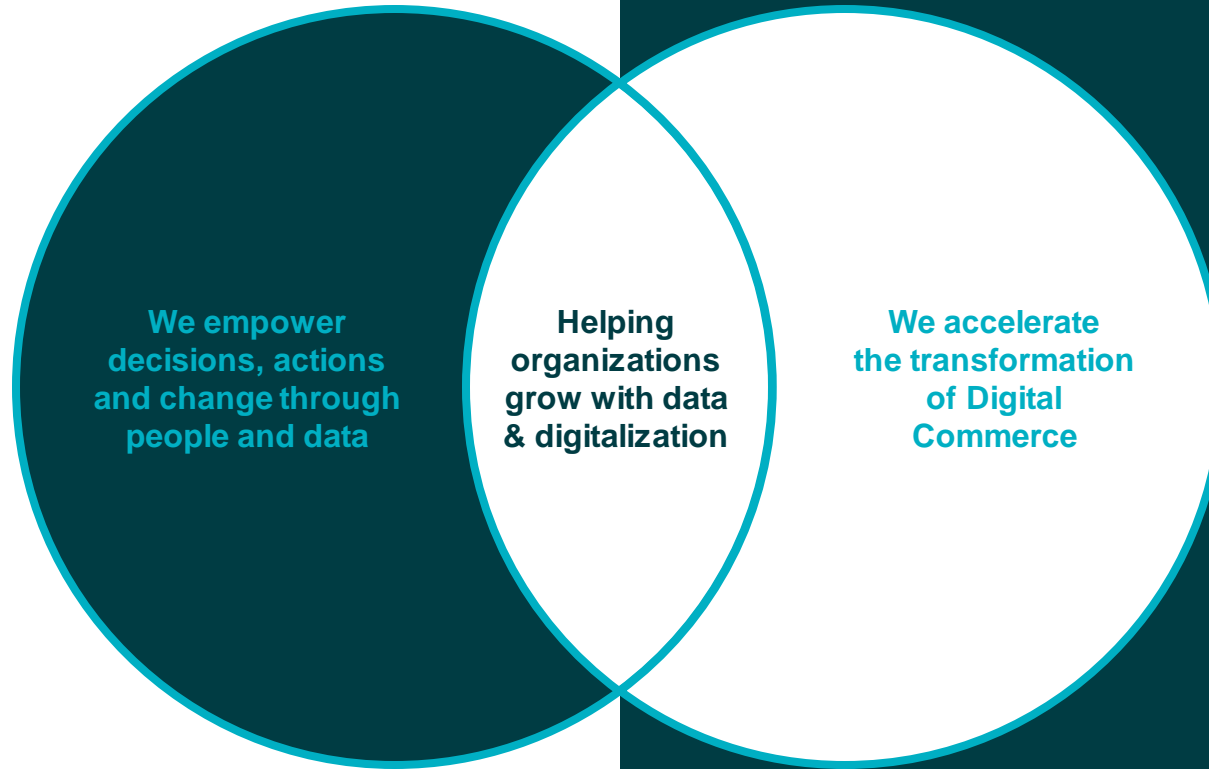
16 years of experience

180 data heroes

+800 customers

30M € in revenue

3 locations



15 years of experience

4.000 colleagues

+500 customers

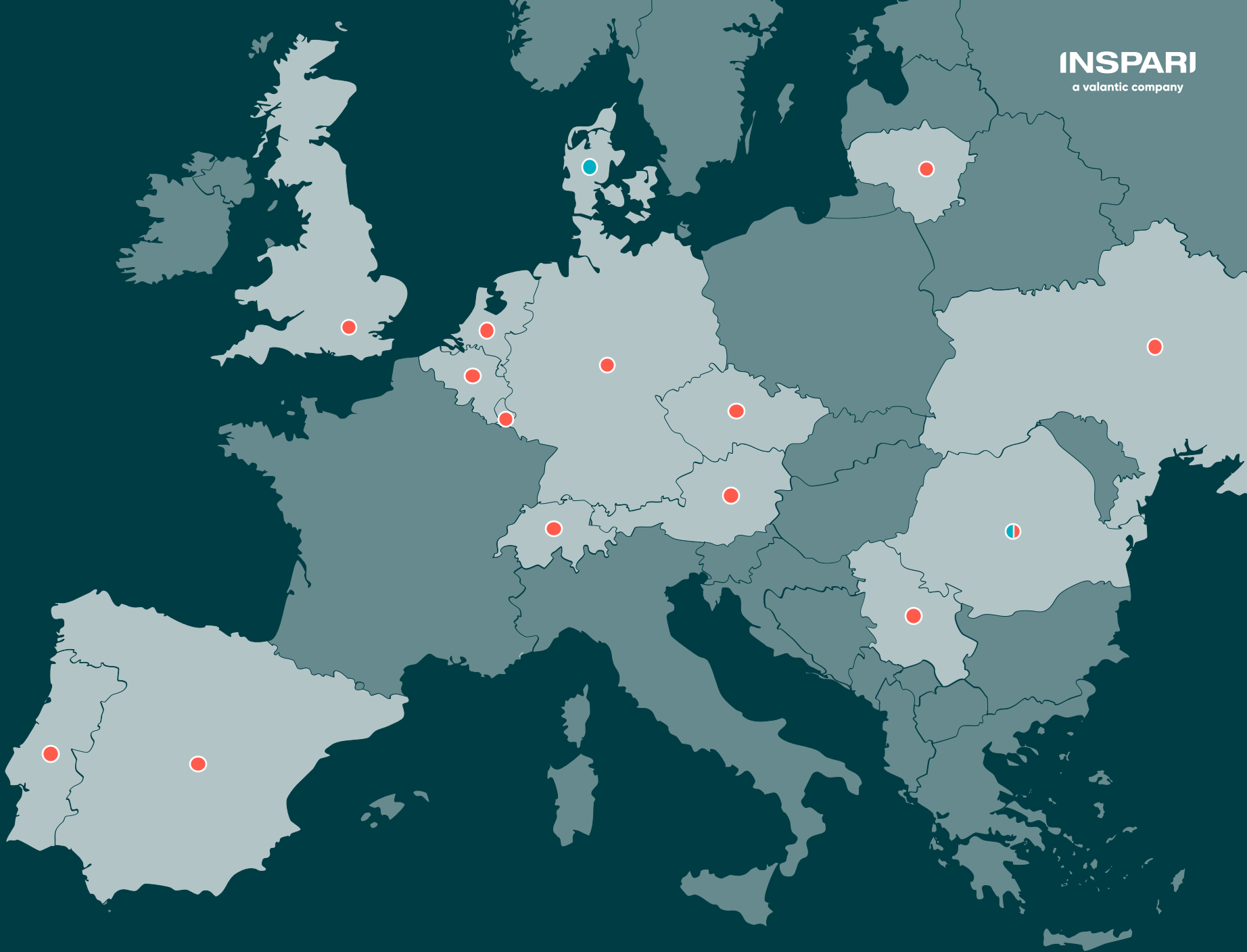
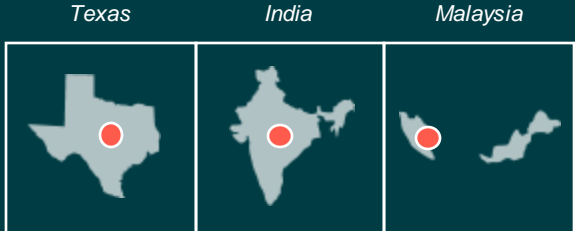
400M € in revenue

25 locations

# valantic locations

Inspari locations:

- Denmark, Copenhagen & Aarhus
- Romania, Bucharest



# Mød din nye digitale assistent

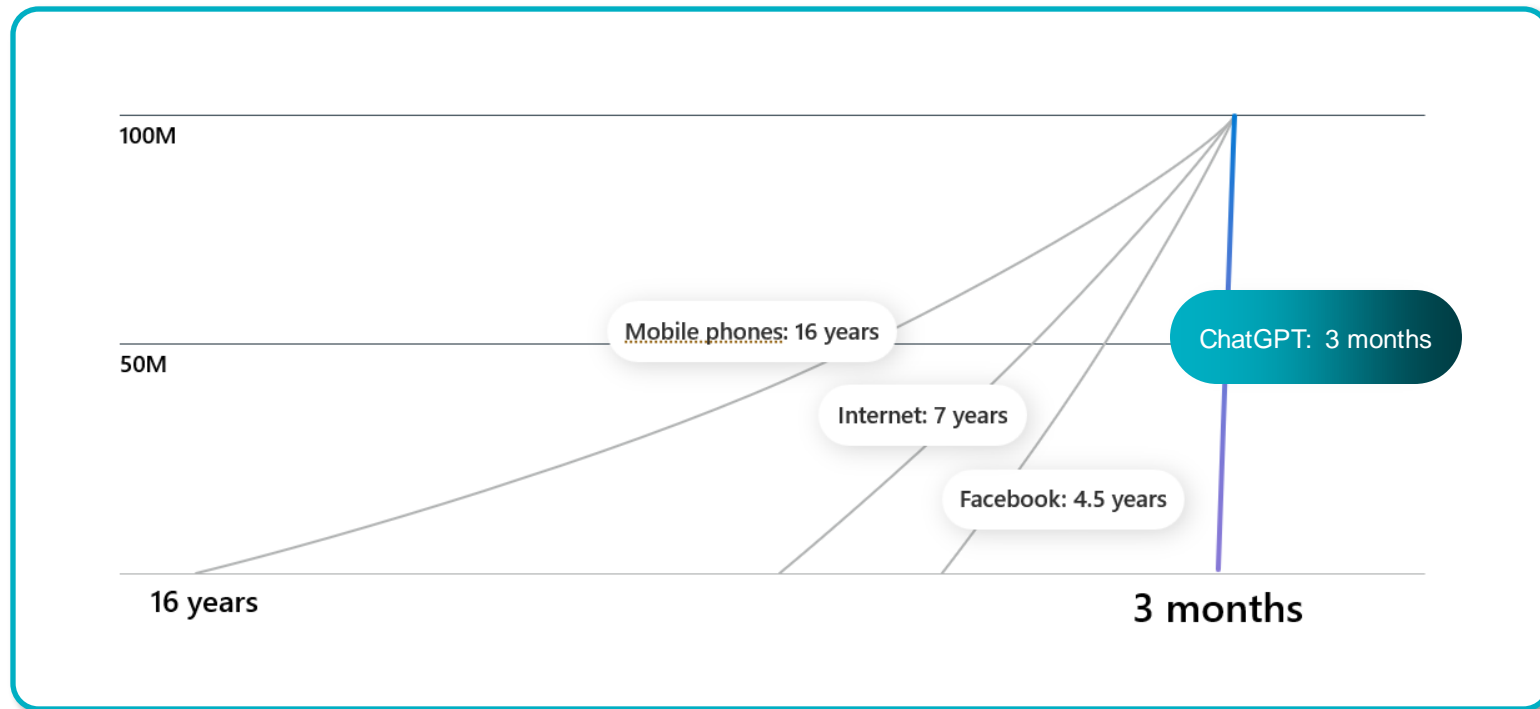
Forestil dig at kunne **optimere** din arbejdsdag ved at **uddelegere rutineopgaver** til AI, og udforske nye muligheder for **effektivitet**, som tidligere lå uden for rækkevidde.



# AI technology and impact

The AI technology is here

Time to reach 100M users





# Employees and leaders are ready to embrace AI

**2x**

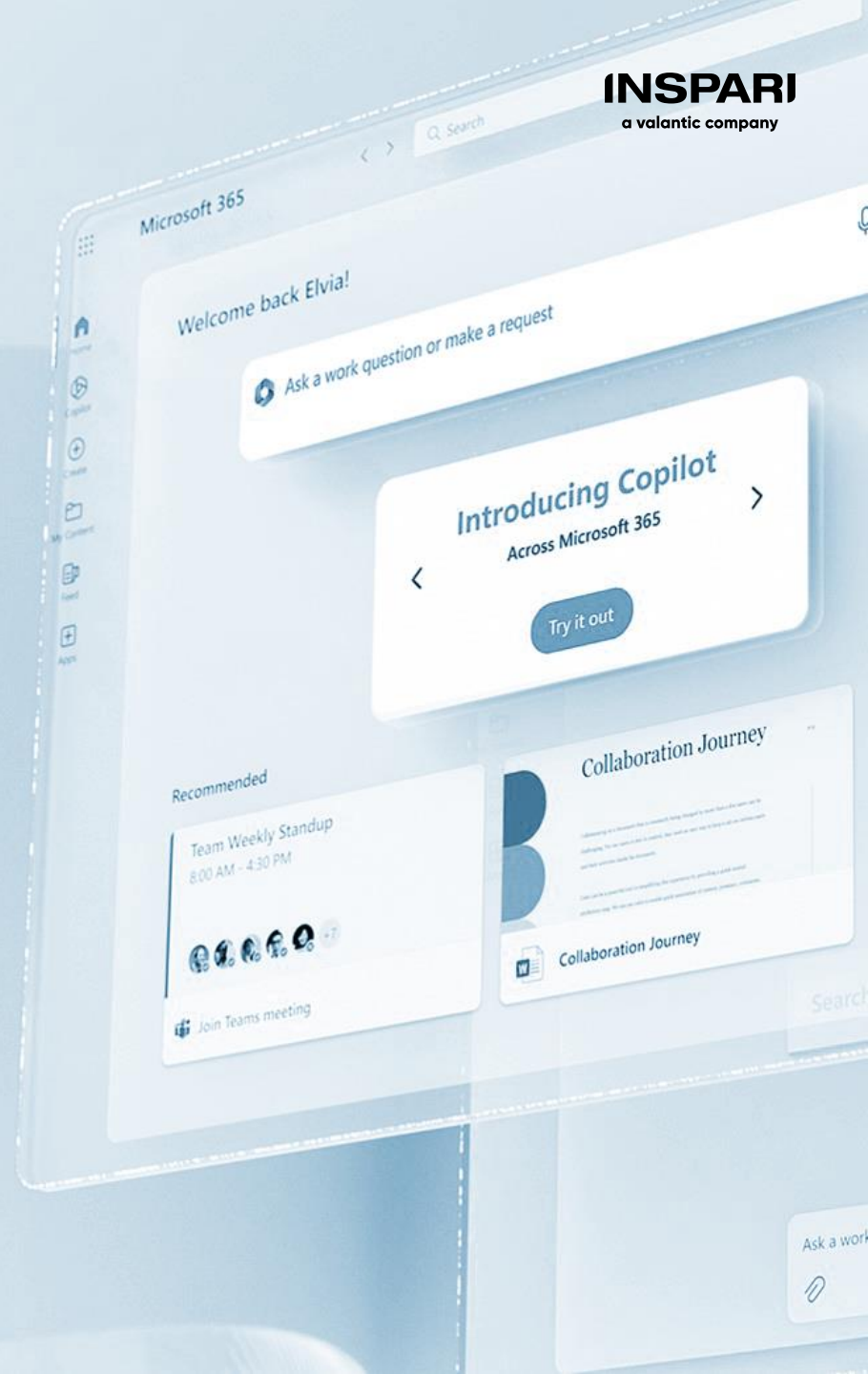
likelihood of a leader to say AI will provide value by boosting productivity versus cutting headcount

**64%**

of employees lack time and energy to do their job

**70%**

of employees willing to delegate work to AI



# Copilot er betegnelsen for Microsoft generative AI services

A Copilot for every Microsoft Cloud Experience



# Licensing and Pricing

## Availability and pricing:

- Available since January 16, 2024, for all customers in all sales channels (EA/MCA/CSP/WEB)
- MSRP Price 30 USD per seat per month (360 USD per seat per year)
- Only available as annual term with annual upfront payment
- Possible to align NCE renewal date to NCE base subscription (coterminosity)
- No minimum purchase requirements
- Available in Danish April 2024

## Eligible Base Licenses are:

- Microsoft 365 Business Standard
- Microsoft 365 Business Premium
- Microsoft 365 E3
- Microsoft 365 E5
- Office 365 E3
- Office 365 E5

## Education customers

- Office 365 A3/A5 Faculty
- Microsoft 365 A3/A5 Faculty

# Digital debt is costing us innovation

**64%**

of employees don't have  
enough time or energy to  
do their job

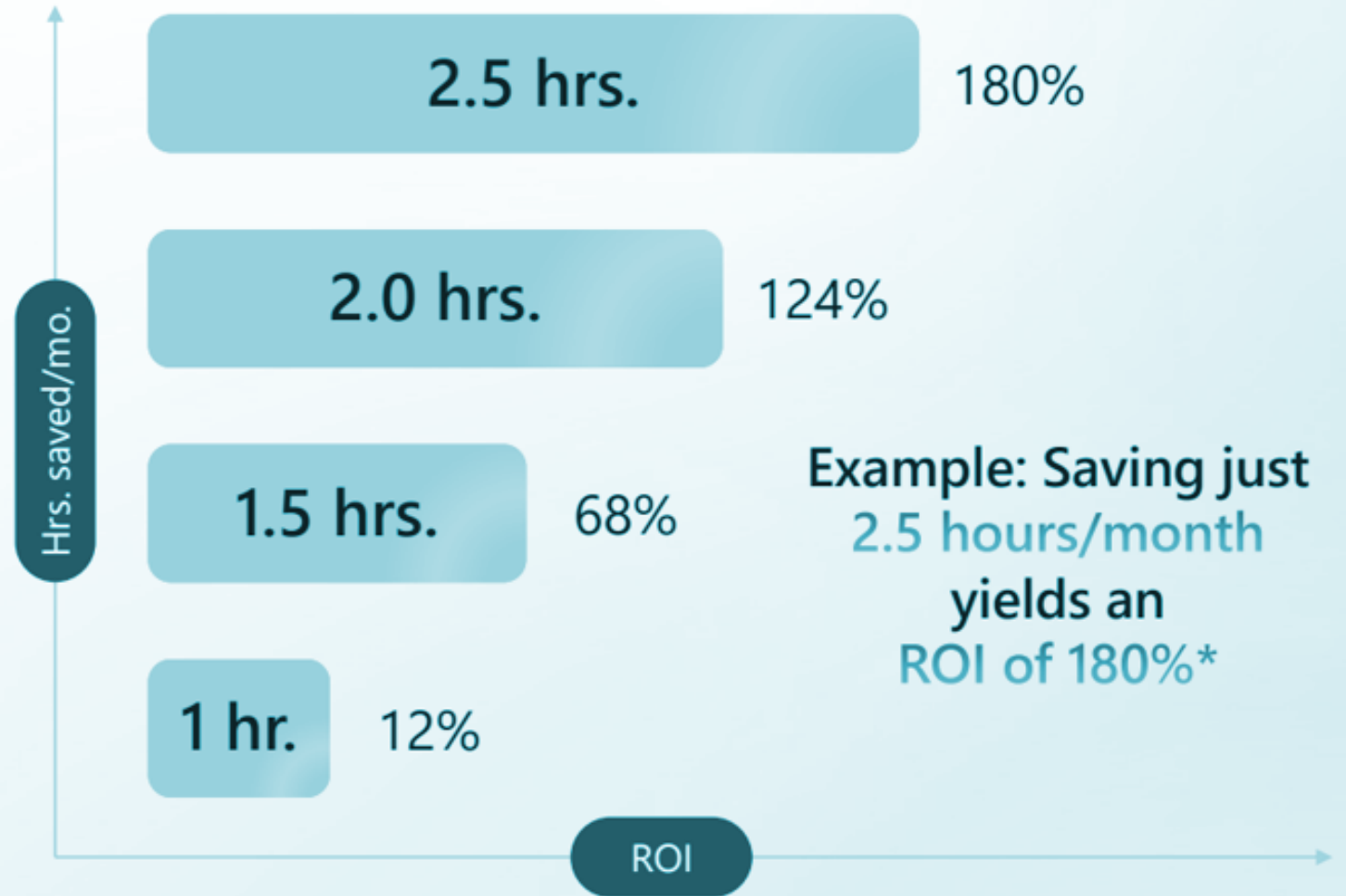
**57%**

of employees' time is  
spent communicating

**43%**

of employees' time is  
spent creating

# How much time can people save with Copilot for Microsoft 365?



\*At \$70,000 employee cost per year, 54 minutes per month = \$30 of employee's time  
See appendix for detailed calculations

How much time  
can people save  
with Copilot for  
Microsoft 365?

Hrs. saved/mo.

**10 hours**

saved per month

\*At \$70,000 employee cost per year, 54 minutes per month = \$30 of employee's time  
See appendix for detailed calculations

	Copilot	Copilot with commercial data protection	Copilot for Microsoft 365
	Personal	Work	Work
<b>GPT Large Language Model</b>	✓	✓	✓
<b>AI-Powered Web Search, Answers &amp; Content Generation</b>	✓	✓	✓
<b>Commercial Data Protection</b>		✓	✓
<b>Microsoft 365 Enterprise Security, Compliance &amp; Privacy</b>			✓
<b>Microsoft 365 Graph (content &amp; context)</b>			✓
<b>Microsoft 365 Apps Integration</b>			✓
<b>Licensing</b>	<b>Public and free</b>	<b>Included with eligible Microsoft 365 licenses</b>	<b>\$30/user/month</b>



# Copilot for Microsoft 365

Unlock productivity and unleash creativity

Natural Language



+



+



+



Large Language  
Models

Microsoft Graph  
- Your Data -

Microsoft 365  
Apps

The  
Internet



# Impact by Workflow



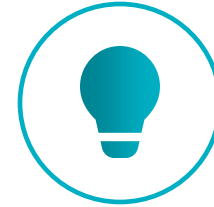
## Effective meetings

- Quickly catch up on meetings you missed
- Summarize a meeting and identify next steps
- Run a more effective meeting



## Data analysis

- Get answers from across all your data
- Instantly uncover key insights
- Create powerful and professional visualizations



## Content creation

- Jumpstart creativity, and write and edit like a pro
- Quickly catch up on the key points of a document or presentation
- Create documents, presentations, charts, and tables



## Email processing

- Draft email replies instantly
- Personalize the tone and length even on the go
- Quickly summarize a long email thread



# Copilot for Microsoft 365

Included at \$30 per user, per month



- ✓ Generate a good first draft faster
- ✓ Jump start the creative process



- ✓ Analyze data faster
- ✓ Help me turn data into insights



- ✓ Create visually appealing presentations faster
- ✓ Create content I couldn't have on my own
- ✓ Less intimidated creating visual content



- ✓ Less time processing email
- ✓ Saves time drafting quick replies



- ✓ More efficient meetings
- ✓ Easier to catch up on what I missed
- ✓ Easier to take next action
- ✓ Attend fewer meetings



# What Copilot is

# What Copilot isn't

TOPIC	WHAT MICROSOFT COPILOT IS	WHAT MICROSOFT COPILOT ISN'T
Integration	AI tool integrated into Microsoft 365 applications	Standalone application or software
Compatibility	It supports applications like Word, Excel, PowerPoint, Outlook, etc.	Not compatible with non-Microsoft applications
Capabilities	It helps with writing, editing, data analysis, and creating presentations and more...	Replacement of human judgment and creativity
Data Scope	Integration with tenant and user data through Microsoft Graph	Access to external databases or non-public data by default
Learning	It can learn and adapt responses based on the current session's context	Continuous learning or adaptation outside the current session
Model (LLM)	Customized, modified language model based on models from OpenAI	Copilot doesn't use the same models as publicly available ChatGPT
Security	Adheres to Microsoft's privacy and security principles	Complete protection against all cyber threats.
Productivity	Increases productivity and work efficiency	Automatic completion of all work tasks
Creativity	Provides suggestions and assists in content creation	Creation of fully original or artistic content

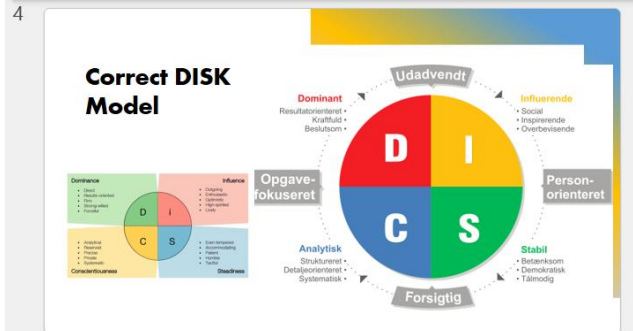
## Illustrations of the DISC Model

- + DISC model in  
different contexts and  
applications

Visualize DISC types and  
their interactions



# Capabilities help, but not replace human judgement



5

### How to Use the DISK Model

+ Understand yourself and others better  
Adapt your behavior and communication accordingly

6

Indflydelse (26 p.)	
<b>Generelle træk</b> De præferer at arbejde på egen hånd. De er personlige og afbalancerede. De er gode til at arbejde på tværs af grænser og har en god evne til at arbejde med andre mennesker.	<b>Kommunikation</b> De formidler kommunikation og vejledning til andre mennesker og sørger for at alle er på samme niveau.
<b>Motivation</b> Anerkendelse Frigør Afsættelse Ledelse	<b>Behov</b> Deltagelse, social påvirkning, demokratiske forhold, mennesker der arbejder med og mennesker der arbejder med, tekniske udfordringer og sociale aktiviteter uden for arbejdspladsen.
	<b>Karaktertræk under pres</b> Nærvær, venlighed, samarbejde, samarbejde.
Dominans (-5 p.)	
Support (-6 p.)	
Kompetence (-15 p.)	
<b>Generelle træk</b> De er personlige og arbejder på egen hånd. De er personlige, præcise og detaljeorienterede. De er gode til at arbejde på tværs af grænser og har en god evne til at arbejde med andre mennesker.	<b>Kommunikation</b> De formidler kommunikation og vejledning til andre mennesker og sørger for at alle er på samme niveau.
<b>Motivation</b> Anerkendelse Frigør Afsættelse Ledelse	<b>Behov</b> Deltagelse, social påvirkning, demokratiske forhold, mennesker der arbejder med og mennesker der arbejder med, tekniske udfordringer og sociale aktiviteter uden for arbejdspladsen.
	<b>Karaktertræk under pres</b> Nærvær, venlighed, samarbejde, samarbejde.



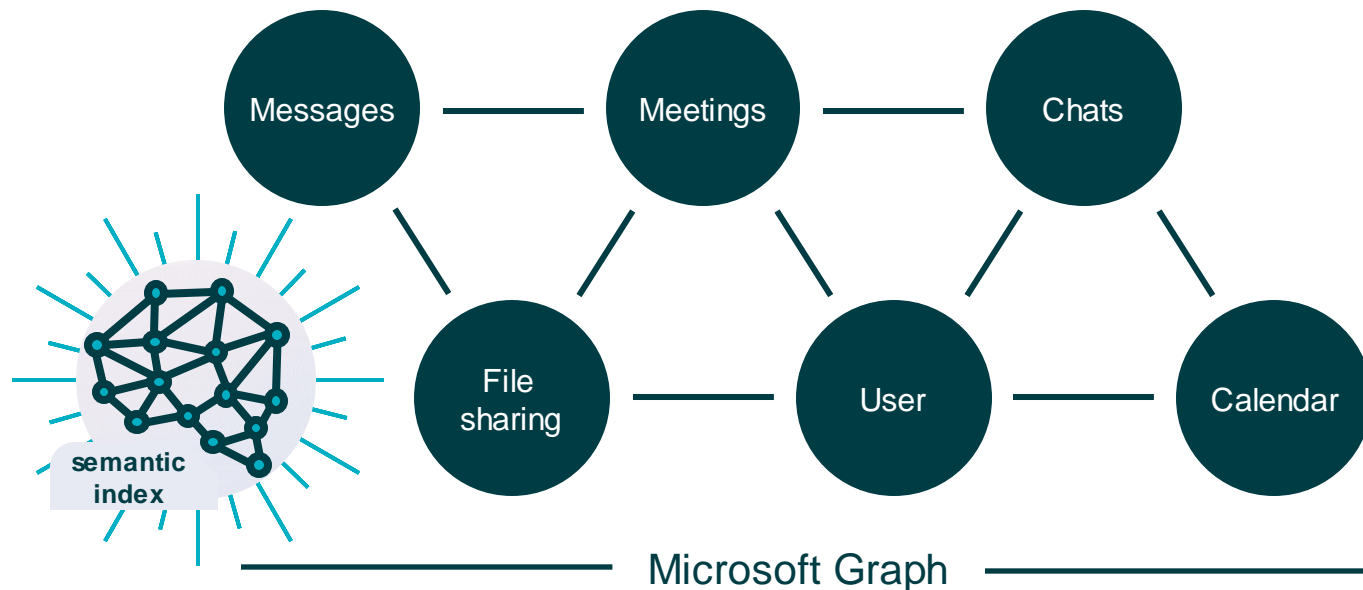
# What Copilot is

# What Copilot isn't

TOPIC	WHAT MICROSOFT COPILOT IS	WHAT MICROSOFT COPILOT ISN'T
Integration	AI tool integrated into Microsoft 365 applications	Standalone application or software
Compatibility	It supports applications like Word, Excel, PowerPoint, Outlook, etc.	Not compatible with non-Microsoft applications
Capabilities	It helps with writing, editing, data analysis, and creating presentations and more...	Replacement of human judgment and creativity
Data Scope	Integration with tenant and user data through Microsoft Graph	Access to external databases or non-public data by default
Learning	It can learn and adapt responses based on the current session's context	Continuous learning or adaptation outside the current session
Model (LLM)	Customized, modified language model based on models from OpenAI	Copilot doesn't use the same models as publicly available ChatGPT
Security	Adheres to Microsoft's privacy and security principles	Complete protection against all cyber threats.
Productivity	Increases productivity and work efficiency	Automatic completion of all work tasks
Creativity	Provides suggestions and assists in content creation	Creation of fully original or artistic content

## Prepare your environment for a better Copilot for Microsoft 365 experience

Implement good content management practices to prepare your organizational data for Copilot.



Review data governance policies, protect sensitive organizational data, and **prevent content oversharing**. Microsoft 365 allows you to:

- Classify Teams to ensure the right people are invited to the right forums

### Business Premium value

- Apply sensitivity labels or restrict permissions in Microsoft 365 apps by using Information Rights Management (IRM)
- Set up retention labels and policies for email



## Privacy in Copilot for Microsoft 365



Copilot inherits your Microsoft 365 policies and commitments



Copilot for Microsoft 365 doesn't train with customer content



Data in different geographies is stored and processed in compliance with GDPR and other Privacy relevant Laws



Microsoft commitments to its customers about the GDPR

[Full summary](#)

[Short summary](#)



# What Copilot is

# What Copilot isn't

TOPIC	WHAT MICROSOFT COPILOT IS	WHAT MICROSOFT COPILOT ISN'T
Integration	AI tool integrated into Microsoft 365 applications	Standalone application or software
Compatibility	It supports applications like Word, Excel, PowerPoint, Outlook, etc.	Not compatible with non-Microsoft applications
Capabilities	It helps with writing, editing, data analysis, and creating presentations and more...	Replacement of human judgment and creativity
Data Scope	Integration with tenant and user data through Microsoft Graph	Access to external databases or non-public data by default
Learning	It can learn and adapt responses based on the current session's context	Continuous learning or adaptation outside the current session
Model (LLM)	Customized, modified language model based on models from OpenAI	Copilot doesn't use the same models as publicly available ChatGPT
Security	Adheres to Microsoft's privacy and security principles	Complete protection against all cyber threats.
Productivity	Increases productivity and work efficiency	Automatic completion of all work tasks
Creativity	Provides suggestions and assists in content creation	Creation of fully original or artistic content

# The customer journey with Copilot for Microsoft 365



## Vision & Value

What is Copilot for M365 and the SMB use cases?

What are the organizational benefits and potential time savings?

Can customers get started with Copilot with commercial data protection?



## Assess & Prepare

How can organizations prepare for Copilot?

What data governance and security policies do they have in place?

How to adopt Copilot securely with Microsoft 365 premium SKUs?



## Purchase, Deploy & Expand

How can partners help customers completing the purchase and deployment of Copilot for M365?

How to help customers expand with organization-wide adoption?



## Adopt & Usage

How can partners help organizations get started with AI prompting and Copilot Labs?

What are the key use cases for customers?

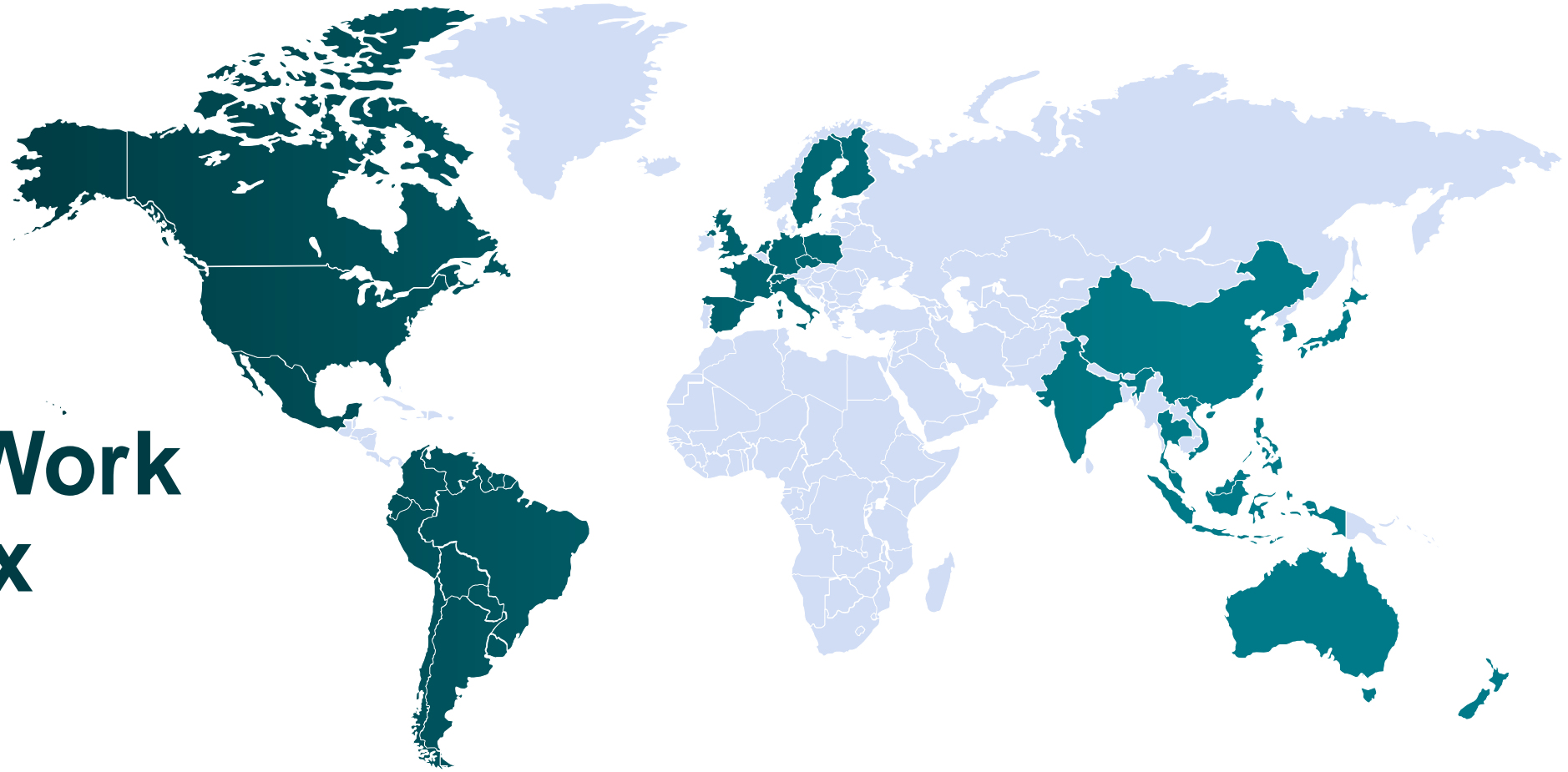
What is their change management plan?



## Extend

What are the services partners can offer to extend value of Copilot with plugins and connections

How to connect to Copilot Studio and other Copilots?



# Microsoft Work Trend Index

<http://aka.ms/wti>

 **31,000** people

 **31** countries

 Microsoft 365, LinkedIn, Glint People Science + academic research

# Early findings – Microsoft 365 Copilot

Internal Microsoft 365 Copilot users across Sales, IT, HR, Engineering, and Marketing

## All Up Value

- 87% agree more **productive**<sup>1</sup>
- 79% focus on **more important work**
- 70% able to stay in the **flow**
- 69% focus on more **satisfying work**
- 79% spent less time on **mundane tasks**

## Value by Workflow

- 81% allows to spend **less time searching** for information
- 73% makes **meetings more efficient**
- 79% allows me to spend **less time processing email**
- 94% makes all **easier to get started** on a first draft

## Value by Role / Function

- 1 in 3** had **>30 min** time savings per day (MCAPS)
- 88% complete **tasks faster** (MCAPS)
- 63% **simplify** complex tasks (MCAPS)
- 58% **reclaim time** for more important work (managers)

## How much is Copilot worth to users?

96% would be disappointed if they **no longer had access to Copilot**

83% would not want to go back to **working without Copilot**

47% access to Copilot would influence my **choice of employer**

# Demo

# Roadmap of capabilities

✓ **Microsoft Copilot Pinned chats:** With the new pinned chats feature, you can pin up to 15 chats for easy access later  
**Rollout Start:** March 2024

✓ **Outlook:** Coaching & Draft by Copilot in classic Outlook for Windows  
**Rollout Start:** March 2024

✓ **Planner Copilot:** Copilot in the Planner will help you generate new plans, set goals, track status, and react to changes  
**Rollout Start:** March 2024

✓ **Outlook: Schedule from email with Copilot** helps you to start scheduling right from the email conversation. It saves you time and effort by generating a meeting invite that's ready for you to review and send.  
**Rollout Start:** May 2024

✓ **OneDrive:** Copilot in OneDrive will allow you to ask questions and get information from files in your OneDrive without having to open the files. It will also summarize one or multiple files.  
**Rollout Start:** May 2024

**Outlook: Follow a meeting in new Outlook for Windows and web:** Follow is a new meeting response (RSVP) option that goes beyond the traditional Accept, Tentative and Decline choices geared towards individuals with high meeting loads and conflicting meetings each day

**Rollout Start:** June 2024

# Lad os fortsætte dialogen



Martin Lytje  
Inspari  
mdly@inspari.dk  
+45 6195 6738



Kasper Fløe  
TD Synnex  
kasper.floe@tdsynnex.com  
+45 2018 7423